

FOR FURTHER INFORMATION CONTACT :
 +91 80032 00700, +91 80032 00400, +91 98109 05792
 011-45644444

The contents of this brochure are purely conceptual and have no legal binding. The developers reserve the rights to amend the layout, plans, dimensions, elevations, colour schemes, specifications and amenities without any notice or intimation. Subject to Bhiwadi jurisdiction.



I saw the branches of the trees
bend down a touch to meet,
the clover-blossoms in the grass
rise up to kiss my feet,

Here runs the highway to the town;
there the green lane descends,
air runs aplenty here,
on which our life depends

A soft ray kissed my cheek
I looked up to find its source
and there through the scattered clouds
it was the sunshine of course

This is the place, a fairyland indeed,
such a beautiful feeling it gives
this is where I make my abode
because this is where happiness lives

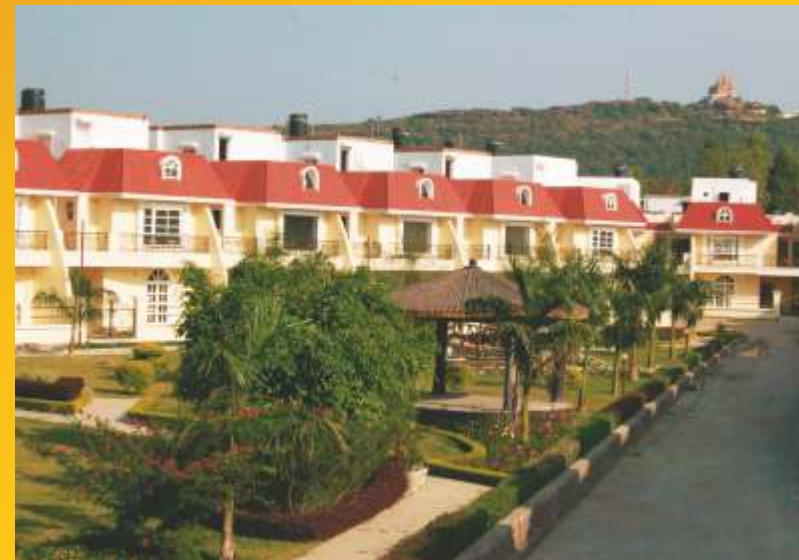


TWO SUNS ON ONE HORIZON

Impossible as it may seem, but when it comes to the developers and promoters of BDI Sunshine City, it stands true. **The rising sun is the BDI Group** which is the principal developer of BDI Sunshine City. A quarter century old real estate development group, BDI has many successful projects across the country under its belt. BDI believes in providing value-added, value-for-money homes that exceed the customer's expectations. BDI Sunshine City is the group's first endeavor in the Tier III towns as a part of its plan to provide world-class housing options in emerging towns of the country.

The second sun in the horizon is Bhaskar Group. The largest Hindi media conglomerate of the country is also making a big impact on the real estate scenario of the country. Keeping abreast it's origin, the group is developing and promoting residential, commercial and retail spaces in tier II and emerging towns of the country. The group's recent landmark in Bhopal, DB Mall is already making waves in the retail scenario. Apart from that, the group also has Aditya Avenue Bhopal, DB City Gwalior and Apollo DB City Indore to its credit.





Aditya Avenue
SUNRISE OF A NEW LIFESTYLE
Airport Road, Bhopal

Apollo db city
happy living

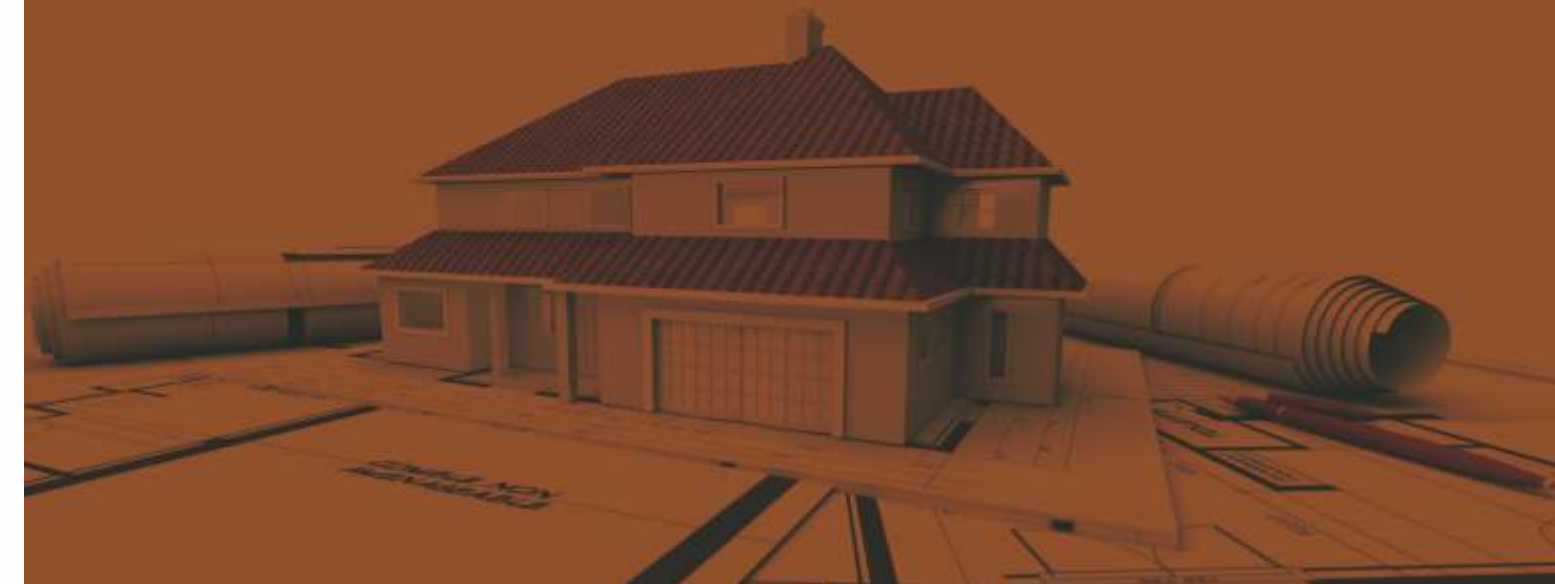



DB CITY
BHOPAL

DB CITY
BUILT AROUND PEOPLE
GWALIOR

A LINEAGE OF PERFECTION

BDI Group has been building homes for over 25 years now. The group has built and delivered quality homes in Chennai, Bhopal, Ahmedabad and Delhi. On the other hand Dainik Bhaskar Group has a strong presence in the real estate arena. The DB Group has developed one of the largest shopping mall in Central India, the DB Mall. Moreover the group has DB City Gwalior and Apollo DB City Indore to its credit.





BHIWADI

NEIGHBOURHOOD

THE LAND OF THE NEW SUNSHINE

Welcome to the sub-continent's third largest industrial hub, welcome to BHIWADI. Located just 40 kms from Gurgaon, 25 kms from Manesar, 70 kms from Delhi, 3 kms from Daruhera and 80 kms from Alwar. To put it simple, you are a stone throw away from everything.

EXISTING COMPANIES IN BHIWADI AND VICINITY

HONDA SCOOTERS	HONDA SIEL
RELAXO	BKT
SHRI CEMENTS	SAINT GOBAIN
SONA KOYO	PEPSI
NAHAR SPINNING	JAQUAR
HERO HONDA	CONTINENTAL ENGINES
UNITED BEVERAGES	KEI
SVR AUTO	CORDS
LIFE LONG	HI-TECH
PERRY WARE	SRF
SAKATA INK	FEDERAL MOGUL
SEIGWORK	SEZ (MAHINDRA)
GILLETTE	SONA
(NOW P&G)	AMTEK
BAUSCH & LOMB	SHRIRAM PISTON

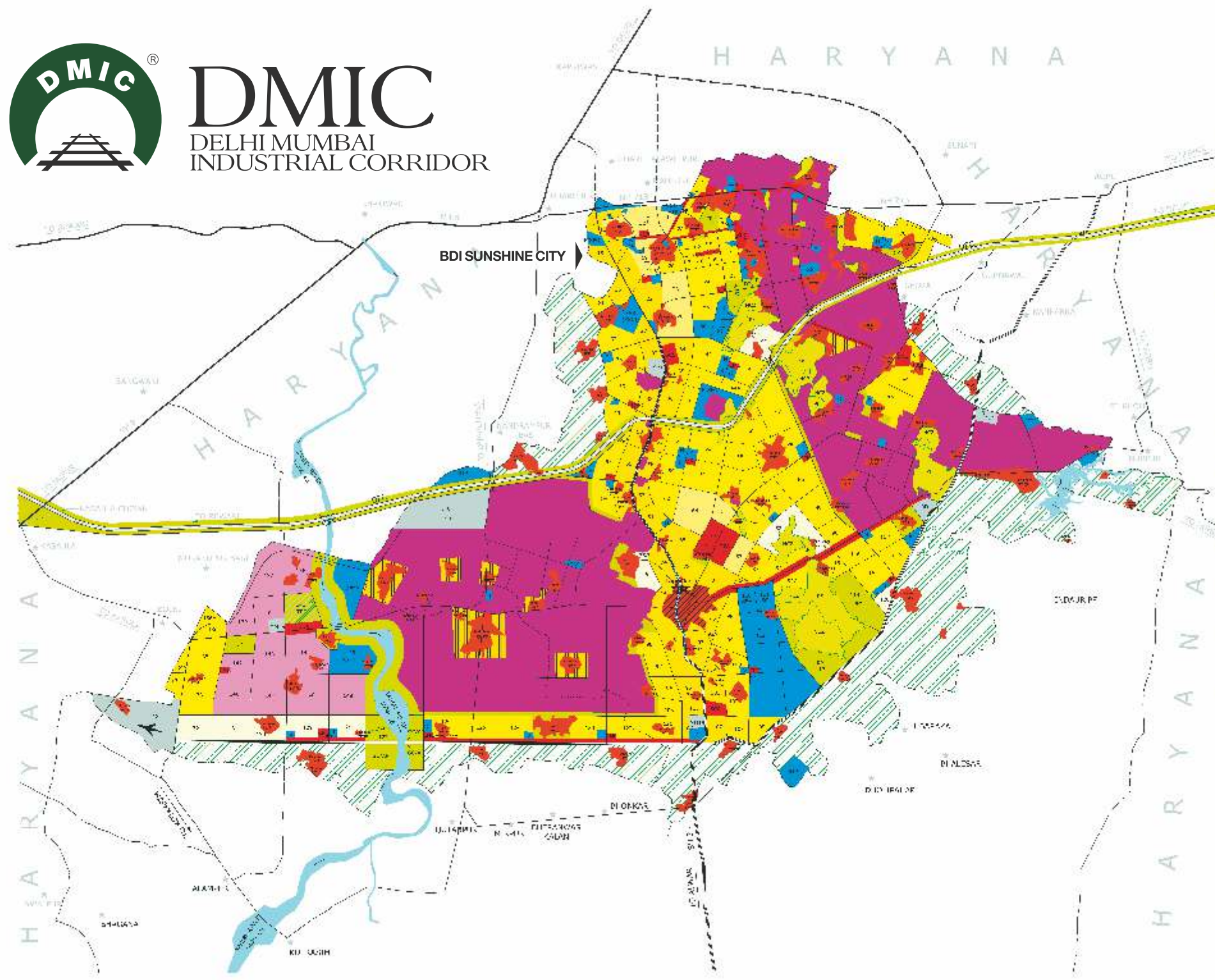
UPCOMING COMPANIES IN BHIWADI AND VICINITY

DR.OETKER
BHARATIMPEX
SPIROTECH
HYTHRO POWER CORPORATION LTD
GEMSCAB CABLES
EURO-AMERICAN PLASTICS
MINDA GROUP
DIPTY LAL JUDGEMAL PVT. LTD.
AMTEK AUTO LTD
SCCI INDIA PVT LTD
SPRINGWEL
HINDWARE
NAVRATAN PIPE & PROFILE LTD
EASTERN POLYCAPS INDUSTRIES LTD
MEMBRANCE GROUP

and countless many more prestigious blue chip companies which are already present in the region. The infrastructure in place is also attracting new players to Bhiwadi. Bhiwadi is developing rapidly, with implementation of neo-modernized townships, residential complexes, retail and corporate houses. In other words, Bhiwadi is the new promising land.



ACTUAL PICTURE



BHIWADI-TAPOOKARA-KHUSHKHERA COMPLEX
 बिहवाडी-तापोकारा-कुशुक्खेरा कॉम्प्लेक्स
LAND USE PLAN-2031
 भू-उपयोग-2031

RESIDENTIAL	UTILITIES
1. High Density Residential	1. STP
2. Medium Density Residential	2. Sewerage Lines
3. Low Density Residential	3. Water Supply Lines
4. Commercial	4. Electric Sub-Station
5. Industrial	5. Transportation
6. Institutional	6. Inter State Bus Terminal
7. Recreational	7. Bus Stand/Bus Stand
8. City Park	8. National Highway
9. Golf Course/Amenity Park	9. State Highway
10. Sports Complex	10. District Road
11. Public/Semi Public	11. Sub Arterial Road
12. Socio-Cultural Facilities	12. Water Body
13. Community Facilities	13. Water
14. Open Space	14. Sewer
15. Green Buffer/Green Belt	15. Storm Water
16. Public/Semi Public	16. F. Water
17. Socio-Cultural Facilities	17. Landfill
18. Community Facilities	18. Hazardous Waste
19. Open Space	19. Special Uses
20. Green Buffer/Green Belt	20. High Density Residential
21. Public/Semi Public	21. Medium Density Residential
22. Socio-Cultural Facilities	22. Low Density Residential
23. Community Facilities	23. Commercial
24. Open Space	24. Industrial
25. Green Buffer/Green Belt	25. Institutional
26. Public/Semi Public	26. Recreational
27. Socio-Cultural Facilities	27. City Park
28. Community Facilities	28. Golf Course/Amenity Park
29. Open Space	29. Sports Complex
30. Green Buffer/Green Belt	30. Public/Semi Public
31. Public/Semi Public	31. Socio-Cultural Facilities
32. Socio-Cultural Facilities	32. Community Facilities
33. Community Facilities	33. Open Space
34. Open Space	34. Green Buffer/Green Belt
35. Green Buffer/Green Belt	35. Public/Semi Public
36. Public/Semi Public	36. Socio-Cultural Facilities
37. Socio-Cultural Facilities	37. Community Facilities
38. Community Facilities	38. Open Space
39. Open Space	39. Green Buffer/Green Belt
40. Green Buffer/Green Belt	40. Public/Semi Public
41. Public/Semi Public	41. Socio-Cultural Facilities
42. Socio-Cultural Facilities	42. Community Facilities
43. Community Facilities	43. Open Space
44. Open Space	44. Green Buffer/Green Belt
45. Green Buffer/Green Belt	45. Public/Semi Public
46. Public/Semi Public	46. Socio-Cultural Facilities
47. Socio-Cultural Facilities	47. Community Facilities
48. Community Facilities	48. Open Space
49. Open Space	49. Green Buffer/Green Belt
50. Green Buffer/Green Belt	50. Public/Semi Public

TOWN PLANNING DEPARTMENT RAJASTHAN

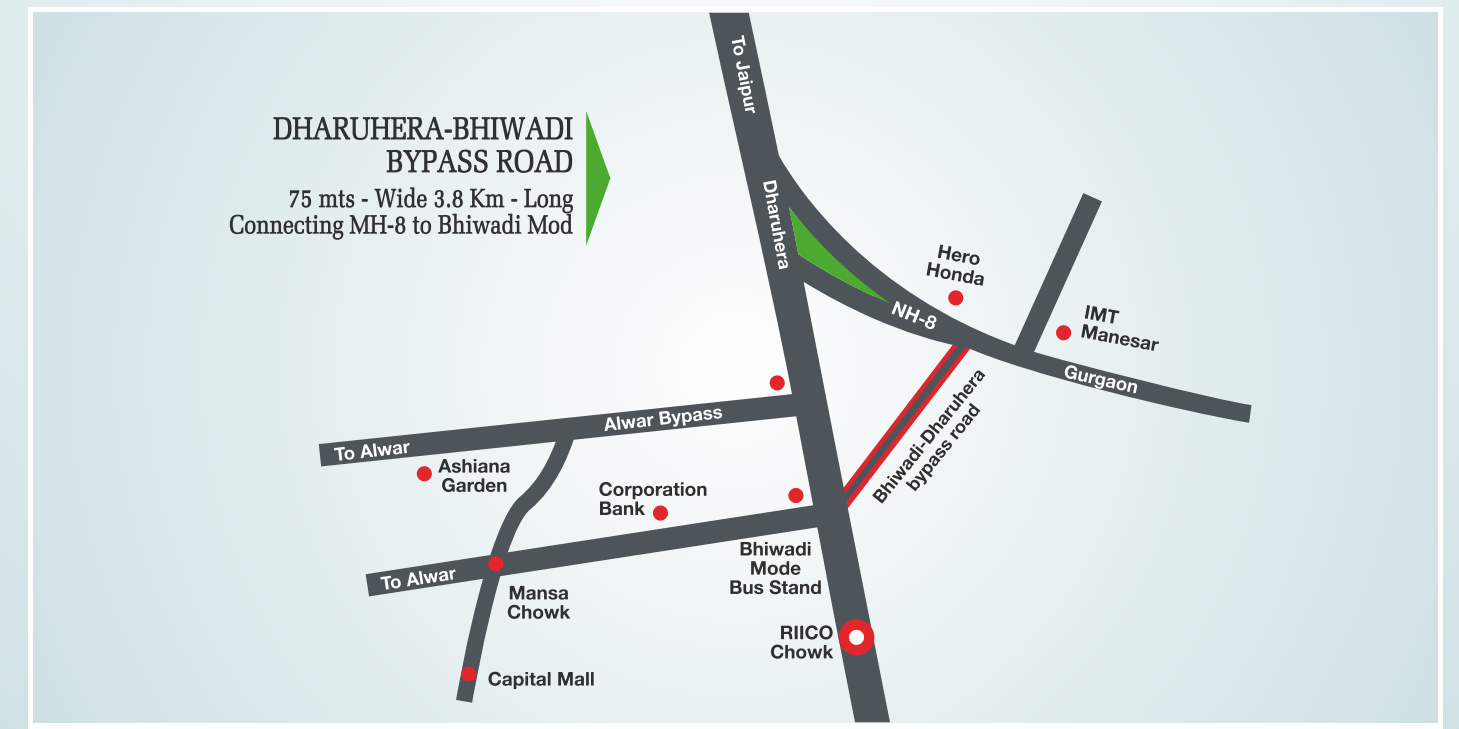


DMIC-DELHI MUMBAI INDUSTRIAL CORRIDOR

THE LIFELINE OF GROWTH

A mega project worth INR 90 billion and technically aided by Japan, DMIC is one of the most ambitious infrastructural project of the country. Covering a total of 1480 kms between the national capital and the business capital of the country, DMIC's lifeline would be a Multi Modal High Axle 6 lane Freight Corridor. The vision for DMIC is to create state of the art infrastructure to activate local commerce, enhance foreign investments and attain sustainable development. The corridor would be blessed with exceptional infrastructural facilities like 9 mega industrial zone of approximately 200-250 sq. kms., each covering three ports and six airports through its length. Specific Investment Regions and Industrial Areas have been identified within the corridor to provide transparent and investment friendly facility regimes.

The Rajasthan industrial triplets Khushkhhera, Bhiwadi and Neemrana have been identified as one of the Investment Region, sure to fuel the industrial and infrastructural growth of these towns. The Freight Corridor is slated to intersect the city and would ultimately become the lifeline of the city. This would mean that with more and more foreign investments heading Bhiwadi's way, the demand for quality residential options would be on a constant high, doubling up the promises that already exist in Bhiwadi.





WHERE HAPPINESS LIVES

Spread over 19 acres is this beautiful abode of happiness. Bang on the lifeline of Bhiwadi, the Alwar Bypass, still away from the hustle-bustle and pollution of a state-highway, the township is tucked away in the lap of open green fields all around.

The campus has 7 high-rise blocks offering 2 & 3 BHK housing options. Of these, 4 blocks are already up and house about 550+ happy families. The other 2 towers are under construction and would be finished and delivered soon.

It's not old, it's not new, it's merely a point-of-view. The sun shines every day, spreading warmth, cheer and life just like BDI Sunshine City home, with the first blink of eyes fill your life with happiness. Crafted to perfection by BDI group, which has over twenty five years of experience in sculpting only one thing; homes, and supported by the media conglomerate, The Bhaskar Group, BDI Sunshine City is the ultimate abode you can find in Bhiwadi.



The campus is packed with all amenities that make living in Sunshine City an experience within itself. Right from the biggest club house in Bhiwadi to the all convenient commercial complex, Spectrum, you'd find both convenience and luxury right at your feet.

Apart from this, the campus has 3 beautifully landscaped green zones with 2 kids play zones and water bodies. Not only that, a place of worship is also on cards.





BASK IN THE SUN

Kids running around with joy, a newly wedded couple enjoying a stroll, a fitness enthusiast running laps around the campus. You can see all this, yet there is room for a lot more. We at BDI believe everyone needs space, we respect that, hence BDI Sunshine City has been planned and executed keeping in mind that very need of yours, SPACE.

Its not just the wide open outdoors but also the same design theme is followed within our homes. With enough space for you to have everything that you need (and not) and yet have the feeling that you could add some more. Come stay with us and celebrate our way of living, which is, spacious living.





WHERE THE SUN SHINES BRIGHT

BDI Sunshine City offers the happiest living experience in Bhiwadi. The 19 acres township is surrounded by open green fields on all three sides and touches the Alwar Bypass Road on one.

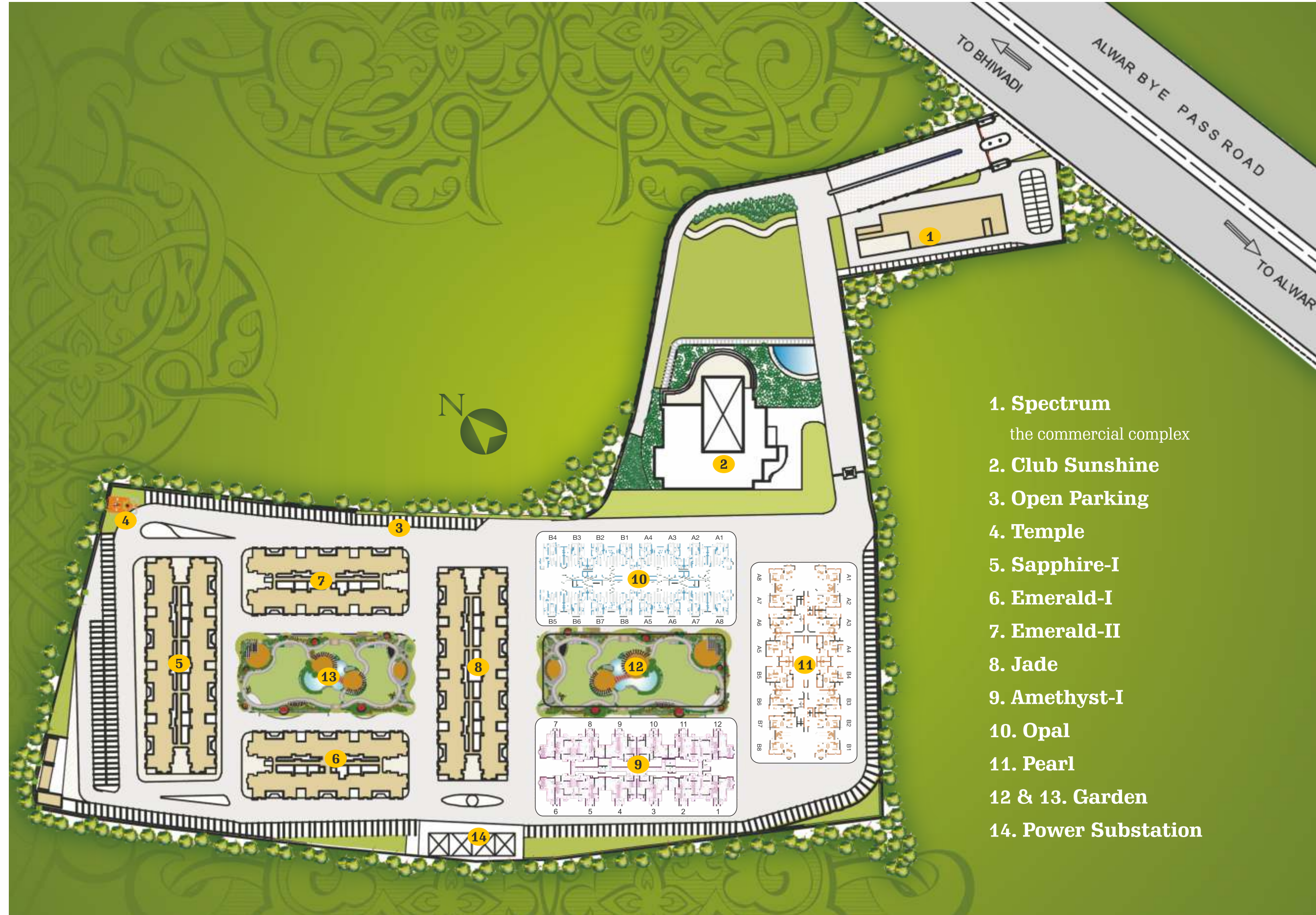
Once on the Alwar Bypass you'll be welcomed by the grand entrance plaza which is guarded 24x7 by our dedicated and alert security staff. And right at the entrance you'd find Spectrum, the commercial complex which is specially built for the resident's convenience.

Move a little further on the wide paved road and you'll be face-to-face with the biggest club house in Bhiwadi, Club Sunshine. The club offers a wide array of recreational facilities for the residents along with a banquet hall, a multi-cuisine restaurant and luxurious guest house.

The entrance to the residential block is again guarded by a security check post, ensuring maximum vigilance and additional security for the residents. The residential compound is divided into 7 high-rise blocks, each offering 2 & 3 BHK housing options to suit your budgets and space requirements.



ACTUAL PICTURE



- 1. **Spectrum**
the commercial complex
- 2. **Club Sunshine**
- 3. **Open Parking**
- 4. **Temple**
- 5. **Sapphire-I**
- 6. **Emerald-I**
- 7. **Emerald-II**
- 8. **Jade**
- 9. **Amethyst-I**
- 10. **Opal**
- 11. **Pearl**
- 12 & 13. **Garden**
- 14. **Power Substation**



GOLDEN TULIP

CLUB & SUITES

International standards, local flavours

• Restaurants & Bar • Banquets • Gymnasium

Apart from the joy of living in a sunshine township, BDI gives you yet another reason to spread that bright smile on your face. Your much awaited clubhouse is now a dream come true as the Golden Tulip Hotel & Suites. Presented by The Golden Tulip chain of Hotels, the world's 2nd largest hospitality chain from Netherlands, with three well-known brands, i.e. Tulip Inn, Golden Tulip & Royal Tulip. Today, this exquisite string of hotels & resorts that has nearly 200 of its luxury edifices operational in 40 countries worldwide. The group has been a pioneer in providing elegant, eminent & highly personalized amenities across its hallmark destination over business & tourist landmarks and some for over half a century now. It's a global leader in providing deluxe levels of comfort to its clientele.

An amalgamation of luxury & recreation, the Golden Tulip Club & Suites would offer you the best for your hours of refreshment, relaxation & respite. An exquisite and classy experience that BDI promises you would be manifested in the latest of amenities and the delightful ambiance at the Golden Tulip!

We've taken every little care to meet your health & leisure needs in the most supreme & world class ways. So if you're one of those who enjoys being entertained as much as entertaining others, then we also cater you with a lazy lounge, a backing bar & a radiant multi-cuisine restaurant. It doesn't end here, the banquet hall & 55 ultra-lavish guest rooms would ensure that your family get-togethers leave a lasting imprint on your guest's mind.

BANQUET HALL | SWIMMING POOL / CHILDREN POOL

KIDS ZONE | CARDS/CHESS/ CARROM ROOM

LOUNGE | BAR | RESTAURANT

SALON | STEAM & SAUNA | TABLE TENNIS

BILLIARDS | GYMNASIUM | 55 ROOMS & SERVICED APARTMENTS



THE SPECTRUM OF THE SUNSHINE

Joy of life is made up of many things; it might be where you live, how you live, what you do, how you are entertained and doing things that make you happy. For some it may be the simple joy of shopping, for some it could be indulging in their favourite cuisine and tantalizing their taste-buds, for some a comfortable hour spent at the salon and then there are the exceptional few who would love to do all of these. Spectrum, the commercial plaza in BDI Sunshine City is made of these very small joys. Offering thoughtfully designed retail, service and office spaces as well as spacious studio apartments, Spectrum presents a full gamut of joyous experiences of living, working, indulgence and lifestyle.



THE GEMS OF SUNSHINE CITY

Opal shows a variable interplay of internal colors. The most striking quality of opal is its ability to refract and reflect specific wavelengths of light. Something like the colours of our life. This gem of gems embodies emotional, spiritual, healing and medical properties.



Blue is the color of sympathy and harmony, friendship and loyalty; and blue is the colour of the Sapphire. It's beauty, it's magnificent colours, it's transparency, & also it's durability are qualities associated with this gemstone.



Pearls are very alluring and hold a quality which defines both - it's elegance & natural beauty. The finest quality natural pearls have been highly valued as gemstones and objects of beauty for many centuries, and because of this, the word pearl has become a metaphor for something very rare, fine, admirable & valuable.



Jade - a gemstone of unique symbolic energy and unique in the myths that surround it. With its beauty and wide-ranging expressiveness, jade has held a special attraction for mankind for thousands of years.



Amethyst's colour is as unique as its seductiveness, though this gemstone of all gemstones is said to protect its possessor against seduction. Apart from these powers, gemstone therapists say that the amethyst has a sobering and cleansing effect.



Emeralds are fascinating gemstones. Fine emeralds are even more valuable than diamonds. Emeralds have been held in high esteem since ancient times. The green of the emerald is the colour of life and the springtime, but it has also, for centuries, been the colour of beauty & everlasting love.



SUNSHINE
WHERE HAPPINESS LIVES